



Atlanta Geological Society Newsletter

Next meeting of the Atlanta Geological Society is
FEBRUARY 19, 2008

Fernbank Museum of Natural History (Clifton Road)
Social begins at 6:30 pm – Meeting begins at 7:00 pm

January 2008

Refreshments for the January 2008 Social are provided by:

Environmental Monitoring Services, LLC

We have staff available to assist you with all your project needs. Our services include: Groundwater Sampling, Geoprobe Services, On-Site Analysis, Ambient Air Sampling, Soil Gas Monitoring, Waste Water Sampling, and Sediment Sampling. Our goal is to provide the highest level of customer service through communication and delivery of our professional services. Based in Atlanta, we serve the entire Southeast and beyond. We own the newest and most advanced sampling equipment in the area. Contact Jeff Johnson at (770) 516-2081 or cell phone (770) 823-7174 for all your environmental monitoring and sampling needs.

Atlanta Geological Society – January 2008 Presentation

Evolution of the Georgia Coast in Response to the Holocene Transgression

By Dr. Timothy M. Chowns

Speaker Biography

Dr. Timothy M. Chowns is a Professor of Geology at West Georgia University. His area of specialty is sedimentology and he has been investigating the geology of Georgia since the early 1970's. Few geologists in Georgia have Tim's love of geology or his vast and in-depth experience in working across the state.



Share your research and work experiences: The Georgia State University Geology Club invites AGS members to present research/work experiences at club meetings. Please contact Ms. Eliza Andrews at eandrews3@student.gsu.edu for additional information.

AGS Career Development – Professional Registration

The AGS sponsors a monthly two-hour workshop to help prepare candidates for the Professional Geologist Licensure Examination. The workshops are held in the Human Resources classroom at the Fernbank Science Center, 156 Heaton Park Dr. from 10:00 am until 12:00 pm the last Saturday of every month. Everyone is welcome to the workshops; AGS membership, while preferred, is not a prerequisite.

We do not "teach the test;" our aim is to review fundamental concepts of the earth sciences and acquaint candidates with industry specific information not easily obtainable from the literature. The next examination will be held on March 7, 2008. Please inform anyone who might be interested in becoming a professional geologist of our workshop. Please consider joining us even if you are not a PG candidate.

The workshops are interesting and informative. If you are interested in attending and would like more information, I can be contacted at kws876@yahoo.com.

Ken Simonton, P.G., Chair
Professional Registration Committee.

Part-time Geology Instructors Needed at Georgia Perimeter College for Spring Semester 2008

Criteria needed to teach at GPC:

Masters degree in Geology with at least 18 graduate semester hours (27 graduate quarter hours) in geology.

Staffing need for Spring Semester on the Dunwoody Campus:

MWF 8:00 a.m. – 8:50 a.m. Physical Geology lecture

TR 6:00 p.m. – 7:15 p.m. Physical Geology lecture

Thurs. 11:00 a.m. – 1:45 p.m. Physical Geology lab

Tues. 7:30 p.m. – 10:15 p.m. Physical Geology lab

Tues. 2:00 p.m. – 4:45 p.m. Historical Geology lab

MWF = Monday, Wednesday, & Friday

TR = Tuesday & Thursday

Who should you contact:

Dr. John Anderson

Department Chair, Dunwoody Campus

770-274-5077



Why is this box blank???

I need your help with collecting information that might be of interest to the AGS membership. It can range from humor to the technically informative. Please consider sending me information to share with the AGS. This newsletter depends upon you.

Thanks,

Carl Froede Jr.
Newsletter Editor

The Professional Registration Committee Needs YOU...

If you are an AGS member and would like to contribute to the Professional Registration Committee by leading a lecture on one of the subjects listed below, then please contact me either by e-mail or at the monthly AGS meetings. The lecture should be for one hour followed by a Q&A session. We need different speakers for each workshop. Your volunteering to teach on one of these subjects is essential to the success of the Professional Registration Committee – we need more widespread participation by the AGS membership. Speakers can be compensated for expenses and will receive certificates to acknowledge their participation. The following content domains are covered in the Georgia Professional Geologist exams:

- A. General Geology
- B. Mineralogy, Petrology, Petrography
- C. Sedimentology, Stratigraphy, & Paleontology
- D. Quaternary Geology, Geomorphology, & Surficial Processes
- E. Structure, Tectonic, & Seismology
- F. Hydrology, & Environmental Geochemistry
- G. Engineering Geology
- H. Economic Geology & Energy Resources

The next workshop will be held January 26th and features Allison Keefer leading a discussion on plate tectonics. Join us!

Ken Simonton, P.G., Chair
Professional Registration Committee

Geologic Image for January...

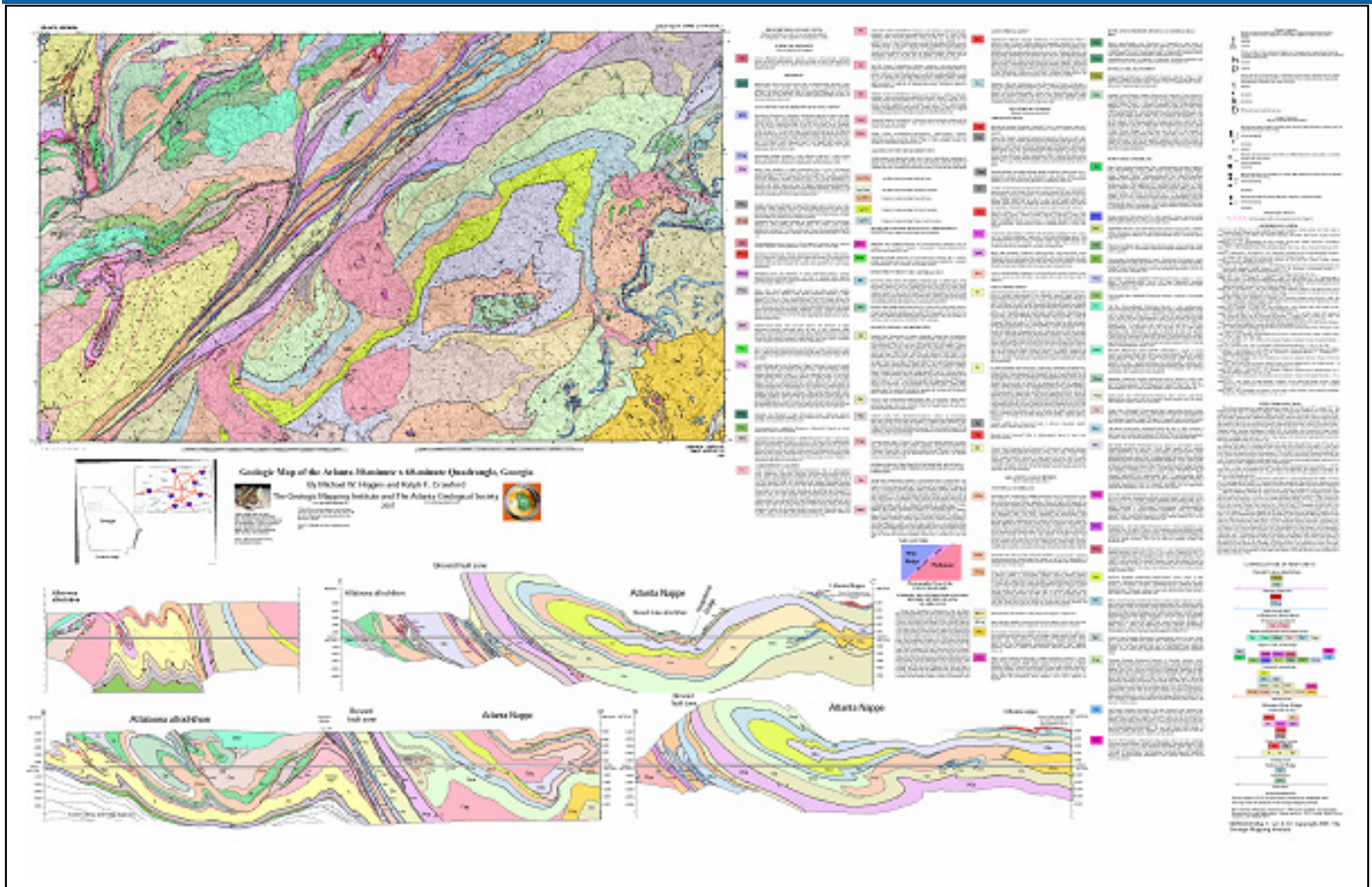
Septarian concretion, Devonian shale, VA

Used with the permission of Dr. Duncan Heron. For more interesting geological images please visit:

<http://southeasterngeology.org/SedimentaryStructures/ss2.htm>

Note that the use of any of Dr. Heron's images requires permission.





GEOLOGIC MAP OF THE ATLANTA 1-DEGREE X 30-MINUTE QUADRANGLE, GEORGIA

By Higgins, M.W. and Crawford, R.F. (2006)

The Geologic Mapping Institute

(\$25.00 – Contact David Keefer [(404) 562-8932] for more details)

The Atlanta quadrangle, roughly centered on the City of Atlanta, spans from the Valley and Ridge province in its northwestern corner across the Blue Ridge and into the inner Piedmont. The Brevard zone crosses the quadrangle diagonally. The Blue Ridge in western Georgia and Alabama consists of a pile of nappes made up of folded thrust sheets. In the Villa Rica nappe Chilhowee Group rocks are both above and below the core of Great Smoky Group rocks. Southwest of the Brevard zone is the Atlanta nappe, which preserves a klippe of the Lake Russell allochthon, Carolina superterrane, at Soapstone Ridge. Carolina superterrane rocks (Paulding Complex) are also found northwest of the Brevard. Mylonites along the S.E. edge of the Brevard zone dip under the Atlanta nappe. These mylonites also dip under the N.E. end of the nappe, where they belong to the Dacula shear zone. East of the Atlanta nappe the Lithonia Gneiss consists of a granitoid phase and the Mount Arabia Migmatite. The migmatite occurs mostly around the edges of the granitoid phase and was probably formed when the Ordovician granitoid phase intruded Stonewall biotite gneiss, which occurs around the edges of the Lithonia and locally as roof pendants on/in the granitoid phase. Atop the Lithonia, the Stonewall Gneiss and units of the Allatoona allochthon are the aluminous schist and Chattahoochee Palisades Quartzite of the Sandy Springs Group that have been thrust upon the underlying rocks. The Lithonia and its country rock, the Stonewall Gneiss constitutes a mantled gneiss dome assemblage. Sandy Springs Group rocks emerge from beneath the Brevard and form an outcrop belt along its N.W. side. Northwest of the Sandy Springs outcrop belt the Allatoona allochthon occupies the upper synformal limb of the Talladega nappe and is arched over the Dog River window to expose western Blue Ridge rocks of the Great Smoky and Chilhowee Groups. Northwest of the Allatoona allochthon Great Smoky Group and Chilhowee Group rocks emerge from beneath the allochthon and are part of the Talladega belt. Ordovician granitoids have intruded the Great Smoky rocks, providing evidence that the Emuckfaw/Lay Dam/Bill Arp rocks are older than Ordovician.

Fernbank Museum of Natural History
Upcoming Public Programs and Events
 (All programs require reservations, including free programs)

Fernbank Museum of Natural History

767 Clifton Rd, NE Atlanta, GA 404-929-6400
 For tickets and details on exhibits, films, and events, please visit our website at www.fernbankmuseum.org

On Exhibit:

- Opening February 9: *In the Dark*

Upcoming Public Programs:

- **Fernbank Forest Family Walk.** Saturday, January 12, 10 a.m. – Noon. Registration required.
- **Keeping a Nature Journal Workshop.** Sunday, January 20, Noon – 4 p.m. Registration required.
- ***In the Dark* Opening Day Celebration.** Saturday, February 9, 10 a.m. – 2 p.m. Included with membership or museum admission.
- **Rain Barrel and Worm Composting Workshop.** Sunday, February 10, 1 p.m. – 3 p.m. Registration required.

Now Showing in IMAX: (Check our website for special screenings)

- *Africa: The Serengeti* (opens January 5)
- *Sea Monsters*
- *Cirque du Soleil™ Journey of Man* (opens January 4)
- **Martinis and IMAX: 2008 Season Opens, Friday, January 4, 2008.** Friday evenings, 5:30 p.m. – 10 p.m.

Atlanta Geological Society Treasurer Report – December 2007

Membership Status - 2008

Professional	Student	Corporate
X	0	0

Account Balance as of 12/31/2008:
\$X,XXX.XX

January 1, 2008, marks not only the first day of the New Year, but also the time that you, as a member of the Atlanta Geological Society, need to submit your annual dues. The Society voted several years ago to follow a calendar year. The new AGS officers begin in January and your membership dues are also due. **Please pay your dues in a timely manner.** Too many individuals allowed their membership to lapse last year. This represents a significant loss of revenue and prevents the Society from meeting philanthropic commitments. If you cannot attend the January meeting then please consider mailing your dues to the AGS Treasurer along with the completed last page of this newsletter. Also, please make sure that we have your most current e-mail address. Thank you.

AGS Field Trips...

Do you have an idea for a field trip? If so, then contact Field Trip Chair David Wilderman.

Martinis & IMAX® is presented at the Fernbank Museum of Natural History every Friday evening, January through November; from 5:30 p.m. to 10 p.m. Enjoy no cover charge when you visit us between 5:30 p.m. to 6:30 p.m. This event includes a wine bar, where featured wines can be purchased by the glass and by the bottle. Dinner is also served in the Dining Room, where smaller parties can order chef-prepared dishes-from gourmet pizzas to prime entrées-and dine together in a more intimate and sophisticated setting. Desserts and coffee are available as well.

As always, a full cash bar is offered in the Great Hall where patrons can enjoy a lively atmosphere and musical performances by some of Atlanta's best jazz artists. Bands perform live from 6:30 p.m. to 10 p.m. IMAX® film tickets are \$10. For those who wish to enjoy the atmosphere of Martinis & IMAX® without attending a film presentation, there is a \$5 cover charge after 6:30 p.m. The cover charge is waived for members and patrons who purchase an IMAX® ticket. To purchase tickets in advance, call 404.929.6400.

AGS Officers

President: Nils Thompson
nwthompson@mactec.com
 Phone (770) 421-3309

Vice-President: Allison Keefer
allison_keefer@dnr.state.ga.us
 Phone (404) 675-1679

Secretary: Jim Kennedy
jim_kennedy@dnr.state.ga.us
 Phone (770) 421-3402

Treasurer: Ken Bechely
ken.bechely@earthtech.com
 Phone (770) 990-1415

AGS 2008 Meeting Dates

Listed below are the planned meeting dates for 2008. Please mark your calendar and make plans to attend.

January 29th – Dr. Timothy M. Chowns - "Evolution of the Georgia Coast in Response to the Holocene Transgression"

February 19th

March 25th

April 29th

May 27th

June 24th - Social (Members and Guests Only)

July - no meeting

August 26th

September 30th

October 28th

November 18th

December - no meeting

Continue to check the newsletter and website for details regarding upcoming speakers/topics.

AGS Committees

AGS Publications: David Keefer
 Phone (404) 562-8932
keefer.david@epa.gov

Career Networking/Advertising: Todd Roach
 Phone (770) 242-9040, Fax (770) 242-8388
tdr@piedmontdrilling.com

Continuing Education: Nils Thompson
 Phone (770) 421-3309
nwthompson@mactec.com

Fernbank Liaison: Chris Bean
 Phone (404) 929-6313
chris.bean@fernbank.edu

Field Trips: David Wilderman
 Phone (770) 431-8666, Ext. 238
dwilderman@arcadis-us.com

Georgia PG Registration: Ken Simonton
ken_simonton@dnr.state.ga.us

Grants & Scholarships: Bill Waggener
 Phone (770) 478-5734
wgwaggenerii@bellsouth.net

Hospitality: David Sanders
 Phone (770) 990-1446
david.sanders@earthtech.com

Membership: Ben Bentkowski
 Phone (404) 562-8507
bentkowski.ben@epa.gov

Newsletter Editor: Carl Froede Jr.
 Phone (770) 562-8550
froede.carl@epa.gov

Website Design: DeLyn Thompson
 Phone (770) 421-3538
dmthompson@mactec.com

Join the Atlanta Geological Society

Membership Application/Update Form

Annual membership dues for the Atlanta Geological Society are \$25 for professional membership, **\$5 for students (new reduced rate)**, and \$100 for corporate sponsorship (which includes up to 4 professional memberships). For further details, contact the AGS Treasurer:

Ken Bechely

Phone: 770-990-1415

Email: ken.bechely@earthtech.com

Make checks payable to the “Atlanta Geological Society” and remit with the completed form to:

Atlanta Geological Society

Ken Bechely, Treasurer
1455 Old Alabama Rd., Ste. 170
Roswell, GA 30076

Name: _____

Organization: _____

Address: _____

Mailing Address: _____

Phone: (Work) _____ (Home) _____ (Cell) _____

Fax: _____

Email 1: _____

Email 2: _____

Ready to Serve the Society?

Remember that although we have officers and various standing committees, it is ultimately the membership that keeps the Atlanta Geological Society active and growing. We have a world of experience within our membership. Please consider volunteering. Your Atlanta Geological Society needs you.