

Atlanta Geological Society Newsletter

Next meeting of the Atlanta Geological Society is
April 26, 2011

Fernbank Museum of Natural History (Clifton Road)
Social begins at 6:30 pm – Meeting begins at 7:00 pm

April 2011

EMServices

Environmental Monitoring Services, LLC

The mission at EMServices is to provide our clients with environmental sampling services for all types of projects. We have staff available to assist you with all your project needs. Our services include:

- Groundwater Sampling
- Geoprobe Services
- On-Site Analysis
- Ambient Air Sampling
- Soil Gas Monitoring
- Waste Water Sampling
- Sediment Sampling

Our goal is to provide the highest level of customer service through communication and delivery of our professional services. *"Certified Small Business under NAICS 541380 Testing Laboratories, NAICS 541620 Environmental Consulting Services, and NAICS 562910 Remediation Services"*

EMServices

Jeff Johnson, President
106 Hartwood Dr, Suite A
Woodstock, Georgia 30189
Phone: (770) 516-2081
Fax: (678) 445-3276

<http://www.emservicesonline.com/>

For more information

inquiries@emservicesonline.com

The April Meeting

Join us Tuesday, April 26, 2011 at the Fernbank Museum of Natural History, 760 Clifton Road NE, Atlanta GA For the April meeting we will be having our annual poster session where students from UGA and GSU will display their posters exhibited at the GSA sectional meeting and Georgia Water Resources conference.

New this year is a **drawing for two sets of tickets to Fernbank's IMAX movie**. Please come out and support the students. Make them explain their poster – it will be good for both of you!

Please support this month's sponsor, EMServices. The generous support of our sponsor helps makes these meeting successful.

Ben Bentkowski
Newsletter Editor

Fernbank Science Center
presents a free lecture

Scientific and Humanitarian Aspects of the 2010 Haiti Earthquake

Thursday, April 21, 2011 at 7:00 p.m.
in the Planetarium

The January 12, 2010 earthquake in Haiti was not particularly large. Magnitude 7.0 events happen dozens of times a year around the world. But this one killed a near-record number of people. Why? What did scientists and the public know about earthquake hazard in Haiti?

Dr. Wayne D. Pennington
of Michigan Technological University
and the US Agency for International Development
will detail the background of the scientific aspects
of the Haiti earthquake, including ongoing and
future risks, as well as an overview of the relief
and reconstruction efforts.



Fernbank Science Center will present a free lecture on Thursday, April 21, at 7:00 p.m. in the planetarium. Dr. Wayne D. Pennington, geophysicist at Michigan Technological University, will speak about the Scientific and Humanitarian Aspects of the 2010 Haiti Earthquake.

While not particularly large, the January 12, 2010 earthquake killed a near-record number of people. The people and government of Haiti were overwhelmed by the size of the disaster, and the world community rushed to provide assistance in situations that made communication and coordination almost impossible. This lecture will provide a background of the scientific aspects of the Haiti earthquake, including ongoing and future risks, as well as an overview of the relief and reconstruction efforts.

Scientific and Humanitarian Aspects of the 2010 Haiti Earthquake

Dr. Wayne Pennington (e-mail address - wayne@mtu.edu)
Michigan Technological University, Houghton, Michigan
And US Agency for International Development, Washington, DC

The 12 January 2010 earthquake in Haiti was not particularly large. Magnitude 7.0 events happen dozens of times a year around the world. But this one killed a near-record number of people. Why? What did scientists and the public know about earthquake hazard in Haiti? Scientists knew that the area was likely to experience an earthquake of this size, but because earthquakes of this size had not occurred in Haiti for the past 240 years, public awareness was negligible. As a result, building codes were non-existent, and huge losses of life resulted.

The people and government of Haiti were overwhelmed by the size of the disaster, and the world community rushed to provide assistance in unimaginably difficult conditions. Civilian, military, and non-governmental organizations from around the world were involved in a relief operation of a magnitude larger than that ever previously staged in peacetime activities. Their cooperation, in situations that made communication and coordination almost impossible, provides a fascinating story that continues today, as reconstruction of the damaged country is attempted.

This lecture will provide a background of the scientific aspects of the Haiti earthquake, including ongoing and future risks, as well as an overview of the relief and reconstruction efforts.

Updates on the Japan earthquake will be included.

AGS Members...The Professional Registration Committee Needs YOU...

If you are an AGS member and would like to contribute to the Professional Registration Committee by leading a lecture on one of the subjects listed below, then please contact me either by e-mail or at the monthly AGS meetings. The lecture should be for one hour followed by a Q&A session. We need different speakers for each workshop. Your volunteering to teach on one of these subjects is essential to the success of the Professional Registration Committee – we need more widespread participation by the AGS membership. Speakers can be compensated for expenses and will receive certificates to acknowledge their participation.

The following content domains are covered in the Georgia Professional Geologist exams:

- | | |
|---|---|
| A. General Geology | B. Mineralogy, Petrology, & Petrography |
| C. Sedimentology, Stratigraphy, & Paleontology | D. Economic Geology & Energy Resources |
| E. Structure, Tectonics, & Seismology | F. Hydrology & Environmental Geochemistry |
| G. Engineering Geology | |
| H. Quaternary Geology, Geomorphology, & Surficial Processes | |

We do not "teach the test" our aim is to review fundamental concepts of the earth sciences and acquaint candidates with industry specific information not easily obtainable from the literature. Please inform anyone who might be interested in becoming a professional geologist of our workshop. Please consider joining us even if you are not a P.G. candidate. The workshops are interesting and informative.

Ken Simonton, P.G., Chair
Professional Registration Committee

www.atlantageologicalsociety.org

Dr. Tamie J. Jovanelly

Assistant Professor of Geology, Berry College

will be the speaker for the PG class on April 30th

Her Research Interests:

- Modern and paleo tsunami deposits,
- Groundwater and surface water interactions,
- Fluvial sediment transport,
- Watershed Analysis

The topic of the morning's lecture has not yet been

specified but given recent history, there will be probably be a tsunami story

or two. <http://www.berry.edu/academics/science/FSDetail.aspx?id=3455>

The lecture usually runs from 10 AM to Noon. Watch your email for further details.





FERNBANK MUSEUM

of NATURAL HISTORY

Fernbank Museum of Natural History

Upcoming Public Programs and Events

(All programs require reservations, including free programs)

LOCATION:

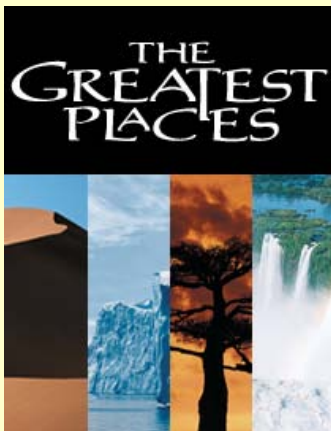
767 Clifton Rd, NE Atlanta, GA

404-929-6400 For tickets and details on exhibits, films, and events, please visit our website at www.fernbankmuseum.org

Follow us on Facebook or Twitter for the latest news and updates!

On Exhibit:

- *Entrance Plaza, featuring a family of Lophorhothon dinosaurs*
- *Martinis and IMAX: Friday evenings, 5:30 p.m. – 10 p.m. The Greatest Places*

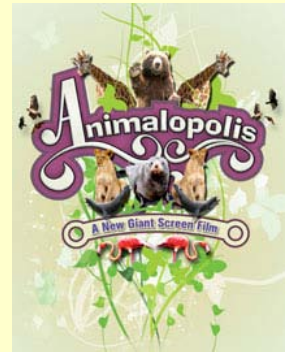
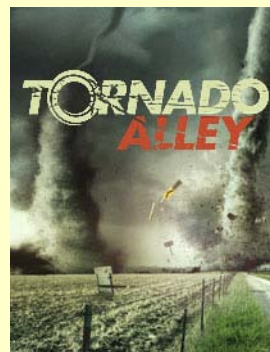


Now Showing in the Fernbank IMAX movie theater:

(Check our website for special screenings)

Current Daytime Schedule:

- **Tornado Alley**
- **Animalopolis**



Coming Soon: *The Ultimate Wave: Tahiti* Opens May 6, 2011

Martinis & IMAX® is presented at the Fernbank Museum of Natural History every Friday evening, January through November; from 5:30 p.m. to 10 p.m. Enjoy no cover charge when you visit us between 5:30 p.m. to 6:30 p.m. This event includes a wine bar, where featured wines can be purchased by the glass and by the bottle. Dinner is also served in the Dining Room, where smaller parties can order chef-prepared dishes-from gourmet pizzas to prime entrées-and dine together in a more intimate and sophisticated setting. Desserts and coffee are available as well.

As always, a full cash bar is offered in the Great Hall where patrons can enjoy a lively atmosphere and musical performances by some of Atlanta's best jazz artists. Bands perform live from 6:30 p.m. to 10 p.m. IMAX® film tickets are \$10. For those who wish to enjoy the atmosphere of Martinis & IMAX® without attending a film presentation, there is a \$5 cover charge after 6:30 p.m. The cover charge is waived for members and patrons who purchase an IMAX® ticket. To purchase tickets in advance, call 404.929.6400.

Fernbank Museum of Natural History

767 Clifton Rd, NE Atlanta, GA 404-929-6400

Special Exhibits On View:

- *DeSoto's Footsteps: New Archaeological Evidence in Georgia* **Last Days!**
- [*Mythic Creatures: Dragons, Unicorns and Mermaids*](#)
- Fernbank Nature Quest
- **Seascapes: Photography of Sandra Gottlieb** (Through August 7, 2011)

Upcoming Public Programs:

Boy Scout Archaeology Merit Badge Program. Saturday, May 7, 9am-1:30 pm. \$25/scout, register at 404.929.6379.

DeSoto's Footsteps, a presentation by Fernbank Archaeologist and Curator Dennis Blanton.

Tuesday, May 24, 7pm. Free with reservation at 404.929.6400

Dinosaur Egg Hunt

Saturday, April 23

Presented in partnership with Radio Disney Fernbank's *Dinosaur Egg Hunt* is returning with expanded egg hunt times, additional giveaways, games, and more. You'll need a bigger basket. Details to be announced soon. Cost: Included with Museum admission. Free for members.

Summer Camp 2011

Give your child a summer of adventure and discovery! Week-long sessions for **rising Kindergarten through 2nd grade students** are available. Educators will guide campers on an exploration of the scientific world during a fun-filled week of activities, crafts, games.

For tickets and details on exhibits, films, and events, please visit our website at www.fernbankmuseum.org

Follow us on Facebook or Twitter for the latest news and updates!

AGS Officers

President: Nils Thompson
nils.thompson@lbgatlanta.com
 Phone (678) 594-9893, Ext. 202

Vice-President: Cassidy Evans
 Phone (770) 492-8230
ceevans@golder.com

Secretary: Rob White
 Phone (404) 463-0679
robeth@bellsouth.net

Treasurer: Stacey Durden-Phillips
 Phone (678) 594-9893. ext 205

AGS Committees

AGS Publications: Allison Keefer
 Phone (404) 657-8642
allison_keefer@dnr.state.ga.us

Career Networking/Advertising: Todd Roach
 Phone (770) 242-9040, Fax (770) 242-8388
tdr@piedmontdrilling.com

Continuing Education: Currently Open

Fernbank Liaison: Chris Bean
 Phone (404) 929-6313
Chris.bean@fernbankmuseum.org

Field Trips: Josh Jenkins
 Phone (770) 421-3412
jljenkins@mactec.com

Georgia PG Registration: Ken Simonton
 Phone: 404-825-3439
kws876@gmail.com

Teacher Grants: Bill Waggener
 Phone (404)355-7377
wgwaggenerii@bellsouth.net

Hospitality: Tom Watson
 Phone (678) 358-6943
twwatson@mindspring.com

Newsletter Editor and Membership
 Ben Bentkowski
 Phone (404) 562-8507
bentkowski.ben@epa.gov

Web Master : Kathaleen Bentkowski
kathaleen770@gmail.com

www.atlantageologicalsociety.org

AGS 2011 Meeting Dates

Listed below are the planned meeting dates for 2011. Please mark your calendar and make plans to attend.

April 27 Annual Poster Session + IMAX drawing

May 31 TBD

June 28 Annual Social and IMAX Movie

August 30 TBD

CALENDAR OF UPCOMING GEOLOGICAL ORGANIZATIONS' EVENTS**April**

- 26 AGS annual poster session following GSA and GAWRC (6:30-8:30 at the Fernbank Museum).
30 AGS PG workshop (10:00-12:00 at the Fernbank Science Center in the Bird Room). TBA.

May

- 6 Clemson Hydrogeology Program field trip. Scott Brame, et al. – Chattooga River Geomorphology. (no, it's not a duplicate) <http://www.clemson.edu/ces/hydro/symposium/fldtrp.html>
19 SME lecture (6:30-8:30 at GC&SU). Cesar Basilio, Thiele Kaolin – New Developments in the Kaolin Industry.
21 STEP Summit at Georgia Tech.
20 GGWA lecture (12:00-1:00 at the GAWP office). TBA.
28 AGS PG workshop (10:00-12:00 at the Fernbank Science Center). TBA.
31 AGS lecture (6:30-8:30 at the Fernbank Museum in the Bird Room). TBA.

June

- 25 AGS PG workshop (10:00-12:00 at the Fernbank Science Center in the Bird Room). TBA.
28 AGS annual social and IMAX movie (6:30-8:30 at the Fernbank Museum).

July

- 22 GGWA lecture (12:00-1:00 at the GAWP office). TBA.
30 AGS PG workshop (10:00-12:00 at the Fernbank Science Center in the Bird Room). TBA.

August

- 11 SME lecture (6:30-8:30 at GC&SU). Krumb Distinguished Lecturer David Armstrong, Montana Tech – Different Techniques for Classifying Mineral Resources.
24-26 Georgia Environmental Conference (GEC) annual conference (Hyatt Regency, Savannah).
27 AGS PG workshop (10:00-12:00 at the Fernbank Science Center). TBA.
30 AGS lecture (6:30-8:30 at the Fernbank Museum in the Bird Room). TBA.

September

- 20 AGS lecture (6:30-8:30 at the Fernbank Museum). TBA (could be prep for GGS field trip).
23 GGWA lecture (12:00-1:00 at the GAWP office). TBA.

October

- 7-9 GGS field trip. TBA (could be Fred Rich, Georgia Southern – Coastal Georgia)
20 SME lecture/webinar (6:30-8:30 at GC&SU or webinar). John Murphy, 2011 SME President – Seeking Opportunities for Dialogue with SME Sections.
25 AGS lecture (6:30-8:30 at the Fernbank Museum). TBA.

November

- 18 GGWA lecture (12:00-1:00 at the GAWP office). TBA.
29 AGS lecture (6:30-8:30 at the Fernbank Museum). TBA.

SUMMER GEOLOGY VACATION IDEAS



The South Dakota School of Mines and Technology offers several fossil digs:

Fossil Lake Ice Age

Judith River Dinosaurs

Little Houston Quarry Dinosaurs
Marine Reptiles

Family Paleo

Please check the website for the dates. They are all this summer.

<http://museum.sdsmt.edu/field-paleo/>

Honoring The Stone

June 21 – 25, 2011

Candyce Garrett, Sculptor

Alexandra Morosco, Assistant Sculptor / Tool Representative

This sculpture workshop, led by renowned stone sculptor Candyce Garrett, is designed to help beginning to professional sculptors develop their skills working with Alabaster, Limestone, Marble, and Granite

The Abiquiu Workshops, located in [Abiquiu, New Mexico](#), about an hour north of Santa Fe, is pleased to announce a partnership with Ghost Ranch Education & Retreat Center. Abiquiu Workshops is honored to collaborate with this venerable arts organization to bring you intensive, week-long creative explorations in various artistic disciplines — from photography, painting and sculpture to writing.

<http://abiquiuworkshops.com/schedule/honoring-the-stone/>

ATLANTA GEOLOGICAL SOCIETY

www.atlantageologicalsociety.org

ANNUAL MEMBERSHIP FORM

Please print the required details and check the appropriate membership box.

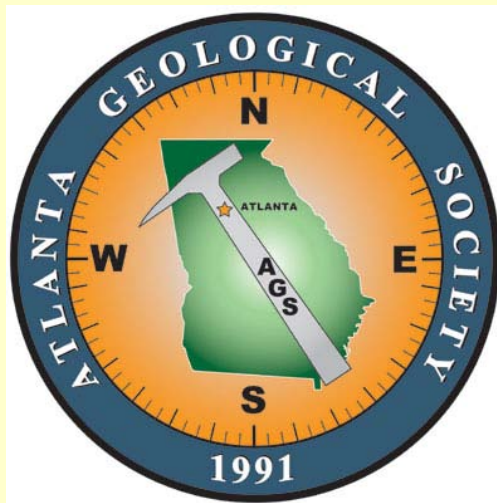
DATE: _____

NAME: _____

ORGANIZATION: _____

TELEPHONE (1): _____ TELEPHONE (2): _____

EMAIL (1): _____ EMAIL (2): _____



STUDENT \$10

PROFESSIONAL MEMBERSHIP \$25

CORPORATE MEMBERSHIP \$100

(Includes 4 professional members, please list names and emails below)

NAME: _____ EMAIL: _____

NAME: _____ EMAIL: _____

NAME: _____ EMAIL: _____

NAME: _____ EMAIL: _____

For further details, contact the AGS Treasurer: Stacy Durden-Phillips; telephone: 678.594.9893, ext 205; stacy.durden@lbgatlanta.com.

Please make checks payable to the "Atlanta Geological Society" and remit with the completed form to:

Atlanta Geological Society, Stacy Durden-Phillips, Treasurer,
1925 Vaughn Road NW, Suite 100, Kennesaw, GA 30144-4560.

CASH

CHECK (CHECK NUMBER: _____.)