

# Atlanta Geological Society Newsletter

**Next meeting of the Atlanta Geological Society is  
January 25, 2011  
Fernbank Museum of Natural History (Clifton Road)  
Social begins at 6:30 pm – Meeting begins at 7:00 pm**

## JANUARY 2011

### ODDS AND ENDS

**Ben Bentkowski, Newsletter Editor**

An important note for this month's meeting. There will be the Annual Fernbank Volunteer Banquet in the Great Hall. I believe we will be meeting upstairs in our usual alternate location. Times will be the same as usual.

I'm sure there are those among us schooled in soil science. I am not one of those but I do believe that I should know more about the gateway to the aquifers I deal with on a daily basis. Did you know that pedologists, are those who study, map, and classify soils as natural bodies, and edaphologists are those that study soils for the agricultural, urban, ecological, and environmental services they provide to humankind. Pedologists have traditionally focused on long-term dynamic soil properties such as the rate of soil formation in a layer of bedrock, while edaphologists (which include agronomists, biogeochemists, civil engineers, among others) often have a detailed understanding of short-term soil dynamics and land use. For more information, please follow the link:

[http://seedmagazine.com/content/article/on\\_soil/](http://seedmagazine.com/content/article/on_soil/)

Continued on Page 4

### The January Meeting

Join us Tuesday, January, 2011 at the Fernbank Museum of Natural History, 760 Clifton Road NE, Atlanta GA. The pre meeting social starts at 6:30 pm and the meeting will start at 7 p.m. The speakers for the evening will be Mr. Jeff Rothwell, Principal and David Wheeler, President of Greenleaf Environmental Group. Their topic of the evening will be Yellowstone National Park LAUST Remediation Project



Greenleaf offers a complete range of cost-effective services specializing in waste management, remediation, piping systems, industrial maintenance services, lab packing, OSHA and DOT training, and light civil and mechanical construction.

Greenleaf Environmental Group  
4943 Austin Park Avenue  
Buford, Georgia 30518  
phone: 678-714-8420, fax: 678-714-8425  
<http://www.greenleafgroup.net>

This February the DeKalb County School System holds its annual Science Fair. One of the things that the AGS does to repay the Fernbank Science Center for allowing us to use a room to hold the PG Candidate Workshops is to provide judges for the Science Fair. Please follow the links in the flyers below to volunteer. I've done this the last 2 years and have thoroughly enjoyed the experience. A box meal is provided and the judges are finished before 9:00 pm.

Ken Simonton, P.G.



## DeKalb Science and Engineering Fair

Dear Prospective Science Fair Judge:

DeKalb County School System is proud to announce it will host its regional science fairs for middle and high school students on February 9th and February 10th, 2011.

Students from our region will be displaying their research projects for competition in 17 categories representing fields in science, engineering, technology, and mathematics. It is truly a magnificent event to watch these remarkable young students display and present their research projects. Many of the participants in this fair have gone on to great success at both the state and international level of competition.

As a judge, you will have the opportunity to provide an objective measure of what an exemplary science fair project should look like and assist students in refining their research skills. It is our hope to secure the best field of judges to review our students' projects at the DeKalb Regional Science and Engineering Fair. Therefore, we are seeking your assistance to fulfill this goal.

I have attached tentative schedules for the junior division and senior division fairs. Information regarding the location of the fair will be forwarded to you at a later date. Thank you for your participation in the DeKalb Regional Science and Engineering Fair.

Please use the link below to sign up to be a judge:

<http://www.surveymonkey.com/s/SNTKOYF>

Christopher J. Robinson, Ph.D.  
Department of Teaching and Learning  
K-12 Science Coordinator  
1701 Mountain Industrial Boulevard  
Stone Mountain, Georgia 30083  
Office: 678-676-0136

[CHRISTOPHER\\_J\\_ROBINSON@fc.dekalb.k12.ga.us](mailto:CHRISTOPHER_J_ROBINSON@fc.dekalb.k12.ga.us)



## DeKalb Science and Engineering Fair

### Schedule for the Fair on Wednesday, February 9, 2011

Location: Miller Grove High School

2:00 PM – 4:00 PM	Set-up/Registration (Cafeteria)
4:00 PM – 4:30 PM	Inspection (by directors)
4:00 PM – 5:00 PM	Student Activities (Auditorium)
4:45 PM – 5:45 PM	Public Viewing of Projects
5:00 PM – 5:15 PM	Orientation in the Auditorium
5:15 PM – 5:45 PM	Refreshments for students (Cafeteria)
<b>5:30 PM – 6:00 PM</b>	<b>Judges' Orientation</b>
5:45 PM – 6:00 PM	Students report to their projects
6:00 PM	Judging Begins
8:00 PM	Judging Ends Judges will determine if extra time is needed.

### Schedule for the Fair on Thursday, February 10, 2011

Location: Miller Grove High School

1:00 PM – 3:00 PM	Set-up/Registration (Cafeteria)
3:00 PM – 3:30 PM	Inspection (by directors)
3:30 PM – 4:30 PM	Public Viewing of Projects
3:15 PM – 3:30 PM	Orientation in the Auditorium (Students assemble in auditorium)
3:30 PM – 4:15 PM	Student Activities
4:15 PM – 5:00 PM	Refreshments for students (Cafeteria)
<b>4:30 PM – 5:00 PM</b>	<b>Judges' Orientation (Media Center)</b>
4:50 PM – 5:00 PM	Students report to their projects
5:00 PM	Judging Begins
7:00 PM	Judging Ends Judges will determine if extra time is needed.
7:30 PM – 8:30 PM	<b><u>Awards Ceremony – February 10, 2011</u></b> (Student, parents, guests report to auditorium At 7:00 PM

## AGS Members...The Professional Registration Committee Needs YOU...

If you are an AGS member and would like to contribute to the Professional Registration Committee by leading a lecture on one of the subjects listed below, then please contact me either by e-mail or at the monthly AGS meetings. The lecture should be for one hour followed by a Q&A session. We need different speakers for each workshop. Your volunteering to teach on one of these subjects is essential to the success of the Professional Registration Committee – we need more widespread participation by the AGS membership. Speakers can be compensated for expenses and will receive certificates to acknowledge their participation.

The following content domains are covered in the Georgia Professional Geologist exams:

- |   |   |
|---|---|
| A. General Geology  | B. Mineralogy, Petrology, & Petrography   |
| C. Sedimentology, Stratigraphy, & Paleontology              | D. Economic Geology & Energy Resources    |
| E. Structure, Tectonics, & Seismology                       | F. Hydrology & Environmental Geochemistry |
| G. Engineering Geology                                      |   |
| H. Quaternary Geology, Geomorphology, & Surficial Processes |   |

We do not "teach the test" our aim is to review fundamental concepts of the earth sciences and acquaint candidates with industry specific information not easily obtainable from the literature. Please inform anyone who might be interested in becoming a professional geologist of our workshop. Please consider joining us even if you are not a P.G. candidate. The workshops are interesting and informative.

Ken Simonton, P.G., Chair  
Professional Registration Committee

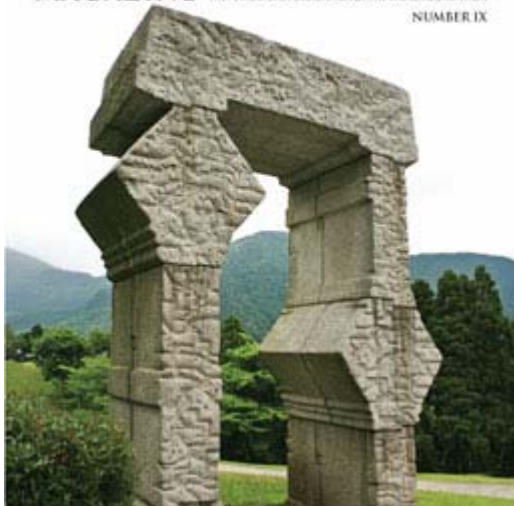
[www.atlantageologicalsociety.org](http://www.atlantageologicalsociety.org)

## ODDS and ENDS Continued

I've recently run across a website that is devoted to stone masonry;  
<http://www.stonefoundation.org/> If you follow the link you can read back issues of their interesting magazine. I find it amazing what one can do with the proper tools and a good eye.

THE STONE FOUNDATION IS A COMMUNITY  
OF STONEMASONS AND OTHERS INVOLVED  
WITH AND/OR INTERESTED IN STONE  
STONEMASONRY AND STONE ART

**stonexus**  
MAGAZINE THE PERIODICAL PUBLICATION OF THE STONE FOUNDATION  
NUMBER IX



I can also recommend this link for issues of the Stone Journal:  
<http://www.selectstone.com/stone-journal/>

I'm sorry to say that I will not be able to attend this January's meeting as I will be on business travel.

Ben Bentkowski  
Newsletter Editor

## The next Atlanta Geological Society PG Candidate Workshop will feature a presentation on rock mechanics by Benjamin Black, P.G.

The next Atlanta Geological Society PG Candidate Workshop will be held the last Saturday of January from 10:00 am to 12:00 pm at the Fernbank Science Center. The Science Center is located at 156 Heaton Park Drive, N.E. Atlanta, GA 30307, and is about a mile north of the Fernbank Science Museum off Ponce DeLeon. For more information about the Science Center, go to <http://fsc.fernbank.edu/>.

Date: January 29, 2011 Time: 10:00am to 12:00pm

Rock mechanics is a discipline that uses the principles of engineering mechanics to describe the behavior of rocks. Rock mechanics deals with the properties of rock and the special methodology required for design of rock-related components of engineering schemes. The subject of rock mechanics is therefore closely aligned with geology and geological engineering. This course will cover the following key concepts and ideas: rock – its properties and what it is from an engineering and geologic perspective, discontinuities and how they affect the properties of the rock mass, stress and strain relationships and their influence on rock mass behavior, and anisotropy. We will then explore why it is important to characterize the rock mechanics regime for any particular problem. Two hours of professional development hours are available to attendees. The classes are open to all, membership in the AGS is not required. If you are not a member, please consider joining. The AGS is the most active geologic organization in the Southeast.

### Benjamin Black, P. G. Bio

Ben works as geological engineer for Arcadis US, Inc. and has thirteen years of experience in hydrogeological analysis and geotechnical assessment and analysis. He has a B.S. in Geology from Eastern Michigan University, an M.S. in Geological Engineering from the University of Idaho, and a Certificate in Applied Geotechnics from the University of Idaho. Mr. Black is a registered Professional Geologist in Georgia, South Carolina, North Carolina, and Mississippi. He is experienced in a wide variety of geotechnical subsurface investigation methods, including geophysical surveys, geotechnical soil borings, and coring of various types of soft and hard rock. In particular, Mr. Black is experienced with the assessment and analysis of rock mass strength with application to slope stability and engineered structures.

Please forward this announcement to anyone that might be interested. Everyone is invited to attend; membership in the Atlanta Geological Society is not required, though everyone with an interest in geology is invited to join. Two Professional Development Hours will be offered for attendance.

If you have questions or need more information, please contact me at [kws876@yahoo.com](mailto:kws876@yahoo.com), or visit our website: <http://www.atlantageologicalsociety.org>.

See you there!

Ken Simonton, P.G.  
Career Development/Professional Registration Committee  
Atlanta Geological Society  
[kws876@gmail.com](mailto:kws876@gmail.com)



# FERNBANK MUSEUM

of NATURAL HISTORY

## Fernbank Museum of Natural History

### Upcoming Public Programs and Events

(All programs require reservations, including free programs)

#### LOCATION:

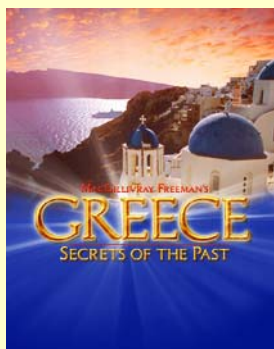
767 Clifton Rd, NE Atlanta, GA

404-929-6400 For tickets and details on exhibits, films, and events, please visit our website at [www.fernbankmuseum.org](http://www.fernbankmuseum.org)

Follow us on Facebook or Twitter for the latest news and updates!

#### On Exhibit:

- *Entrance Plaza, featuring a family of Lophorhothon dinosaurs*
- *Martinis and IMAX: Friday evenings, 5:30 p.m. – 10 p.m. Greece – Secrets of the Past and The Greatest Places*

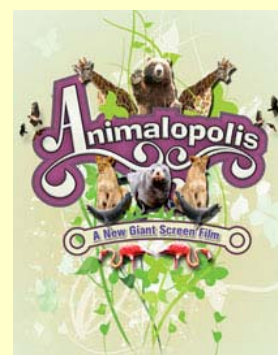
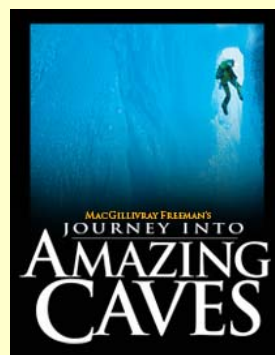


### Now Showing in the Fernbank IMAX movie theater:

(Check our website for special screenings)

#### Current Daytime Schedule:

- **Amazing Caves**
- **Animalopolis**



**Martinis & IMAX®** is presented at the Fernbank Museum of Natural History every Friday evening, January through November; from 5:30 p.m. to 10 p.m. Enjoy no cover charge when you visit us between 5:30 p.m. to 6:30 p.m. This event includes a wine bar, where featured wines can be purchased by the glass and by the bottle. Dinner is also served in the Dining Room, where smaller parties can order chef-prepared dishes-from gourmet pizzas to prime entrées-and dine together in a more intimate and sophisticated setting. Desserts and coffee are available as well.

As always, a full cash bar is offered in the Great Hall where patrons can enjoy a lively atmosphere and musical performances by some of Atlanta's best jazz artists. Bands perform live from 6:30 p.m. to 10 p.m. IMAX® film tickets are \$10. For those who wish to enjoy the atmosphere of Martinis & IMAX® without attending a film presentation, there is a \$5 cover charge after 6:30 p.m. The cover charge is waived for members and patrons who purchase an IMAX® ticket. To purchase tickets in advance, call 404.929.6400.

## Fernbank Museum of Natural History

767 Clifton Rd, NE Atlanta, GA 404-929-6400

### Special Exhibits On View:

- *DeSoto's Footsteps: New Archaeological Evidence in Georgia* (through March 2011)
- [\*Mythic Creatures: Dragons, Unicorns and Mermaids\*](#)  
Opens February 19, 2011

### Upcoming Public Programs:

#### *Mythic Creatures Opening Day Celebration*

Saturday, February 19 from 10 a.m. to 2 p.m.

Celebrate Fernbank's [newest special exhibition](#) with a day of family fun featuring games and giveaways from the B98.5 Street Team, hands-on activities, crafts and more!

Cost: Included with Museum admission. Free for members.

---

#### *Storytelling with Rob Cleveland*

Select Saturdays, January 8, February 12, March 12, April 9 and May 14 at noon

Join us in the Naturalist Center for exciting tales about the natural world with Rob Cleveland, Fernbank's storyteller-in-residence. This program is suitable for children ages 3 and up.

Cost: Included with Museum admission. Free for members.

## AND

Chris Bean recommends this story about Geology from the NPR archives

<http://m.npr.org/news/Science/129858314?singlePage=true>

## AGS Officers

**President:** Nils Thompson  
[nils.thompson@lbgatlanta.com](mailto:nil.thompson@lbgatlanta.com)  
 Phone (678) 594-9893, Ext. 202

**Vice-President:** Cassidy Evans  
 Phone (770) 492-8230  
[ceevans@golder.com](mailto:ceevans@golder.com)

**Secretary:** Rob White  
 Phone (404) 463-0679  
[robeth@bellsouth.net](mailto:robeth@bellsouth.net)

**Treasurer:** Stacey Durden-Phillips  
 Phone (678) 594-9893. ext 205

## AGS Committees

**AGS Publications:** Allison Keefer  
 Phone (404) 657-8642  
[allison\\_keefer@dnr.state.ga.us](mailto:allison_keefer@dnr.state.ga.us)

**Career Networking/Advertising:** Todd Roach  
 Phone (770) 242-9040, Fax (770) 242-8388  
[tdr@piedmontdrilling.com](mailto:tdr@piedmontdrilling.com)

**Continuing Education:** Currently Open

**Fernbank Liaison:** Chris Bean  
 Phone (404) 929-6313  
[Chris.bean@fernbankmuseum.org](mailto:Chris.bean@fernbankmuseum.org)

**Field Trips:** Josh Jenkins  
 Phone (770) 421-3412  
[jljenkins@mactec.com](mailto:jljenkins@mactec.com)

**Georgia PG Registration:** Ken Simonton  
 Phone: 404-825-3439  
[kws876@gmail.com](mailto:kws876@gmail.com)

**Teacher Grants:** Bill Waggener  
 Phone (404)355-7377  
[wgwaggenerii@bellsouth.net](mailto:wgwaggenerii@bellsouth.net)

**Hospitality:** Tom Watson  
 Phone (678) 358-6943  
[twatson@mindspring.com](mailto:twatson@mindspring.com)

**Newsletter Editor and Membership**  
 Ben Bentkowski  
 Phone (404) 562-8507  
[bentkowski.ben@epa.gov](mailto:bentkowski.ben@epa.gov)

**Web Master :** Kathaleen Bentkowski  
[kathaleen770@gmail.com](mailto:kathaleen770@gmail.com)  
[www.atlantageologicalsociety.org](http://www.atlantageologicalsociety.org)

## AGS 2011 Meeting Dates

Listed below are the planned meeting dates for 2011. Please mark your calendar and make plans to attend.

January 25 Yellowstone Remediation Project

February 22 TBD

March 29 TBD

April 27 TBD

May 31 TBD

June 28 TBD

August 30 TBD



## FROM Ken Simonton RE: The P.G. Study Class Dates

The scheduling person at the Science Center, Audrey Poole, has confirmed the following dates and rooms for the PG Classes in 2011:

DATE	VENUE	SPEAKER (unconfirmed)
Jan 29	Human Development Rm	Ben Black
Feb 26	Bird Room	Jim Kennedy
Mar 26	Human Development Rm	
Apr 30	Bird Room	
May 28	Bird Room	
Jun 25	Bird Room	
Jul 30	Bird Room	
Aug 27	Bird Room	



### TRAVERTINE LIMESTONE BEING FORMED AT PAMUKKALE, TURKEY

[Pamukkale](#), meaning [cotton castle](#) in Turkish readers the name of his physical appearance. [Pamukkale](#) is 19 km north of the city of Denizli, 200 km east of [Kusadasi](#). Travertine breathtaking white Pamukkale is formed of layers of water frozen lime watershed near hot springs.

The water sources have a temperature of 35 degrees Celsius (90 degrees Fahrenheit) and has been scientifically proven positive effects on heart disease, arthritis, hypertension, urethra and kidney disease. Healing waters of Pamukkale, the Roman kings came to bathe once, now serving local and international clients. Sitting or lying in pools of Pamukkale and watch the sun set over Denizli Plain below is a great feeling. See the day has its own essence. <http://www.kusadasi.tv/pamukkale-turkey.html>

*I believe this text is translated from Turkish. Ed.*

## Join the Atlanta Geological Society

### Membership Application/Information Update Form

Annual membership dues for the Atlanta Geological Society are \$25 for professional membership, \$10 for students, and \$100 for corporate sponsorship (which includes up to 4 professional memberships). For further details, contact the AGS Treasurer:

Stacy Durden-Phillips  
 Phone: 678-594-9893. ext 205  
 Email: Stacy.Durden@lbgatlanta.com

**Make checks payable to the “Atlanta Geological Society” and remit with the completed form to:**

**Atlanta Geological Society**  
 Stacy Durden-Phillips, Treasurer  
 1925 Vaughn Road NW, Suite 100  
 Kennesaw, GA 30144-4560

Name: \_\_\_\_\_

Organization: \_\_\_\_\_

Address: \_\_\_\_\_

\_\_\_\_\_

Mailing Address: \_\_\_\_\_

\_\_\_\_\_

Phone: (Work) \_\_\_\_\_ (Home) \_\_\_\_\_ (Cell) \_\_\_\_\_

Fax: \_\_\_\_\_

Email 1: \_\_\_\_\_

Email 2: \_\_\_\_\_

Ready to Serve the Society?

Remember that although we have officers and various standing committees, it is ultimately the membership that keeps the Atlanta Geological Society active and growing. We have a world of experience within our membership. Please consider volunteering. Your Atlanta Geological Society needs you.